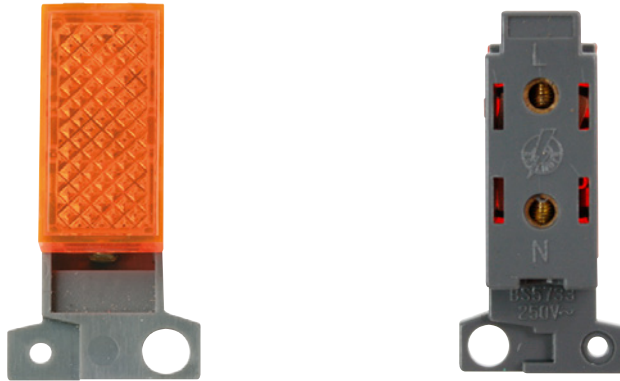


Product Code: MD281

Description: 240V Amber Indicator Module



General Information

Dimensions	25mm (W) x 52.5mm (H) x 19mm (D)
Aperture Dimensions	16mm (W) x 31.5mm (H)
Materials	Cover: Polycarbonate Rear Housing: Nylon
Maximum Voltage	250V 50Hz
Terminal Size	3.5mmø
Terminal Torque	0.4Nm
Terminal Capacity	4 x 1.5mm ² or 2 x 2.5mm ²
Neon Indicator	Yes (Amber)
Back Box Depth	Dependent On Plate Used
Operational Temperature	-5°C to +40°C
Warranty	10 Years

Standards BS 5733: 2010

Additional Information

Ensure that the mains supply is isolated before commencing installation and refer to the circuit diagram with the relevant product.
Bare earth cables must always be covered with appropriate sleeving and wired to the earth terminal.